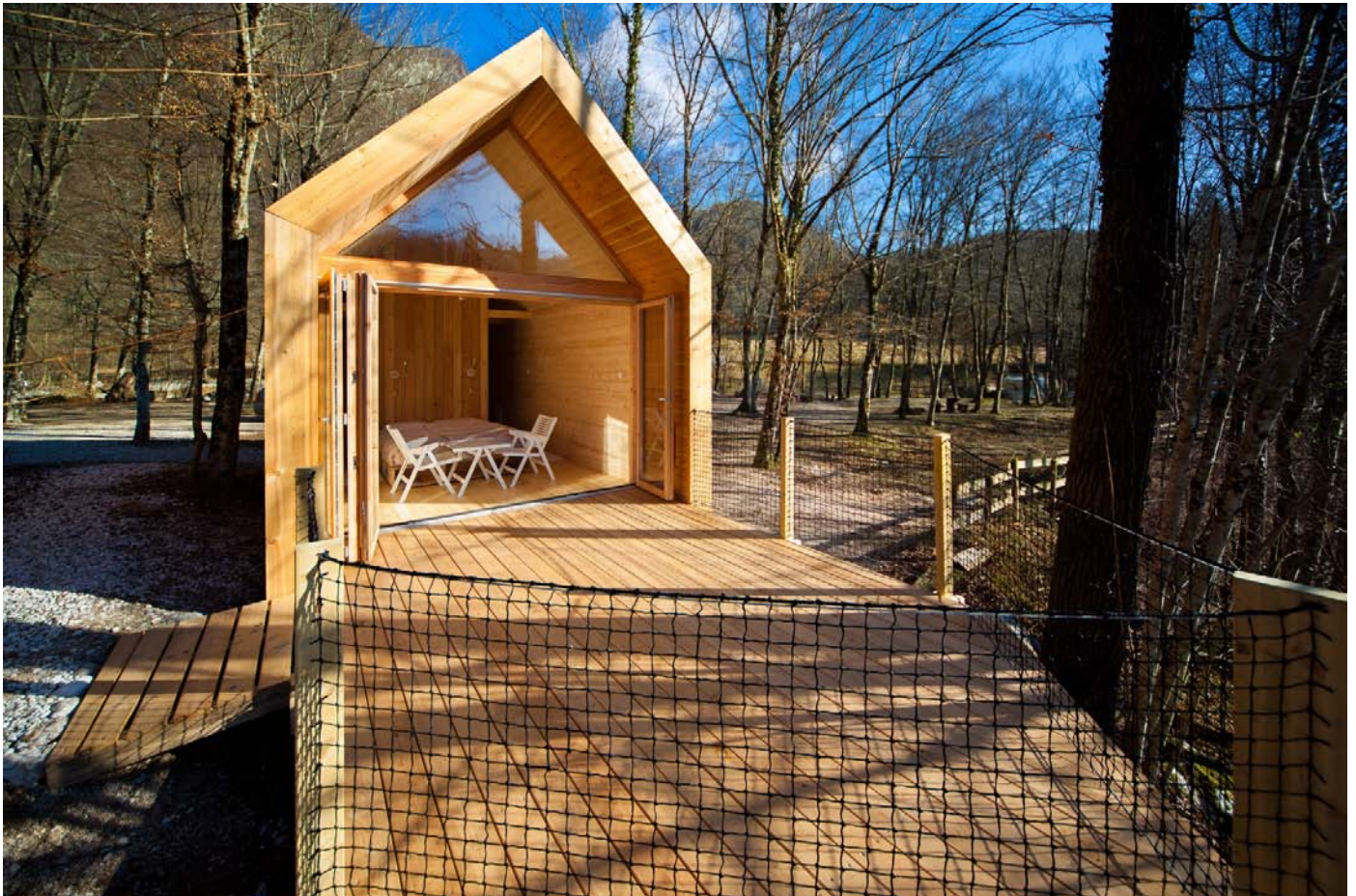


LUSHNA Suite LUX

Traditional forests cottage reinvented for the most pristine contact with nature.



CONNECTION TO NATURE
full panoramic window wall

TOP NATURAL MATERIALS
larch and spruce wood

UNIQUE DESIGN, FULL COMFORT
queen-size bed and openness to terrace

WOODEN MOBILE HOME
toilet, shower and kitchen inside

FOUR SEASONS PRODUCT
12 cm eco insulation

COSY
small but spacious

A complete glamorous experience in nature with the comfort of a hotel suite.

Designed for the most demanding glampers who search for an intimate space. The central-space is occupied by a queen size bed perfect for romantic indulging with the view on ever-changing drama of mother nature. Lushna suite is equipped with shower, toilette, and small kitchen.

LUSHNA®

Lushna ® / T: +386(0)70584258 / E: info@lushna.com / www.glamping-lushna.com /
Vodnikova cesta 38, 1000 Ljubljana / Slovenia

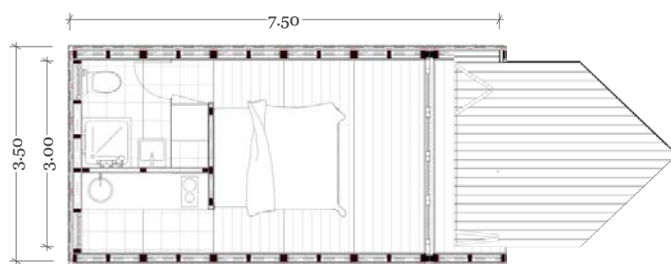
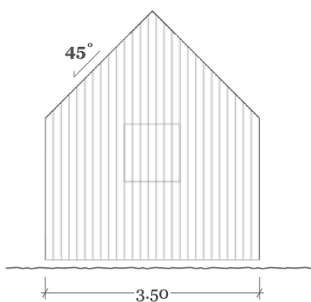
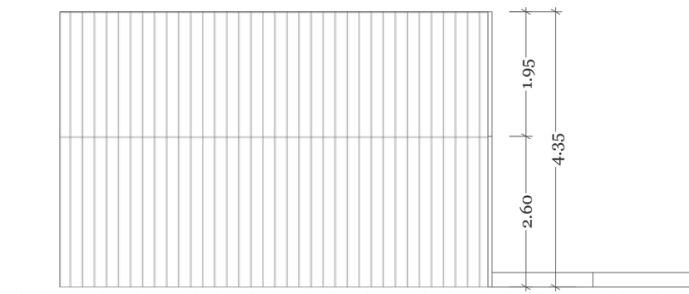
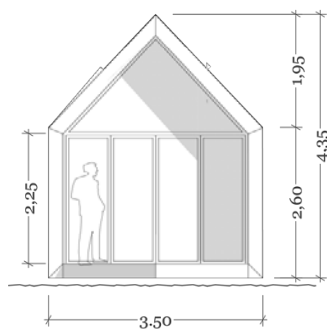
LUSHNA Suite LUX

Seamless connection to Nature



7.50/3.50/4.35 m, 19 m² net **SIZE**
indoor and facades **MASSIVE WOOD MATERIAL**
Light frame **CONSTRUCTION**
12 cm **ECO INSULATION**

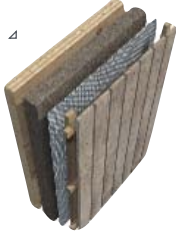
SPACIOUS Loft feeling of freedom
ALL IN ONE toilet, shower and kitchenette inside.
CAPACITY 2 people
ECO FOUNDATION* Ground screws - concrete free



LUSHNA Suite LUX: Features



Privacy, sun and wind screen (optional)



Quality construction, insulated for coldest winters



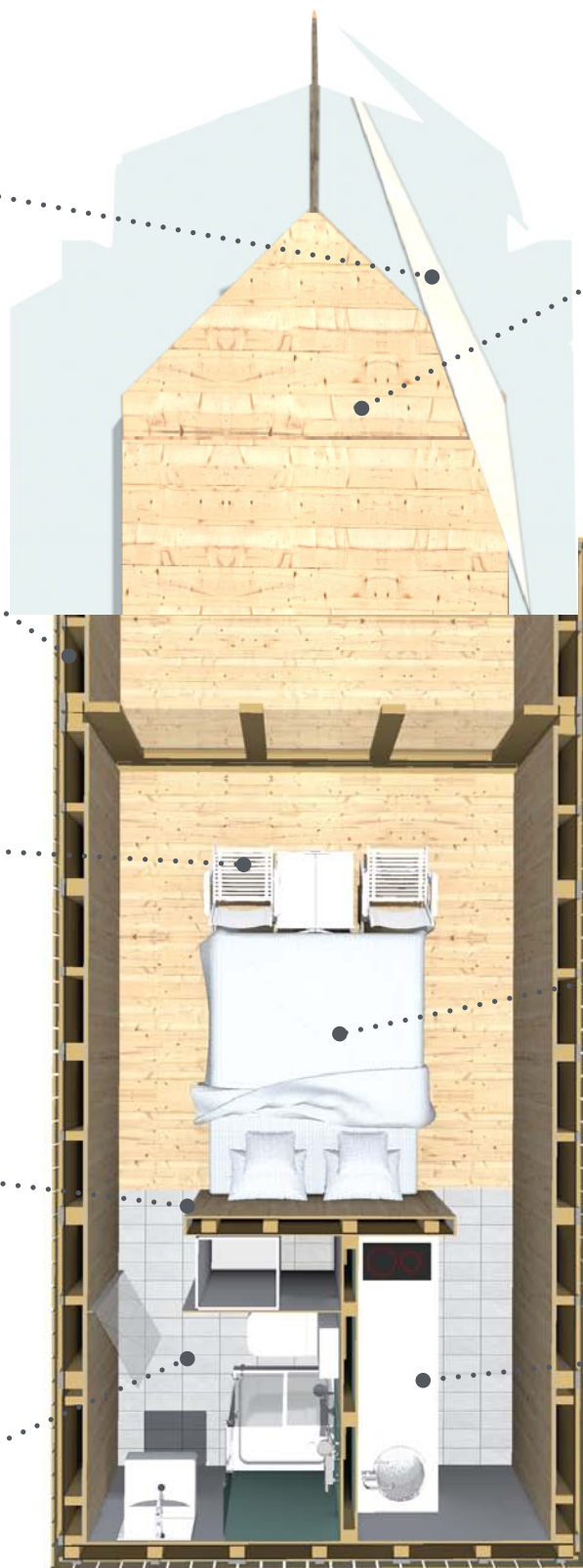
Lounge chairs and coffee table (optional)



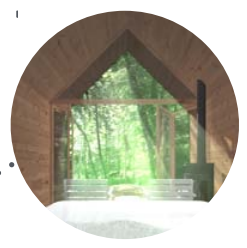
Electric installation



Small but spacious bathroom



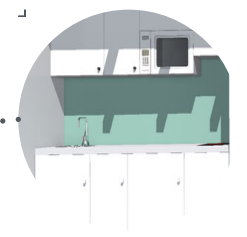
Terrace - living space extension



Bedroom in nature front glass wall - full window opening



Cosy queen size canopy bed



Spacious kitchen

LUSHNA Suite LUX: Kitchen & living room



Electric water kettle (optional)



Air ventilation hood (optional)



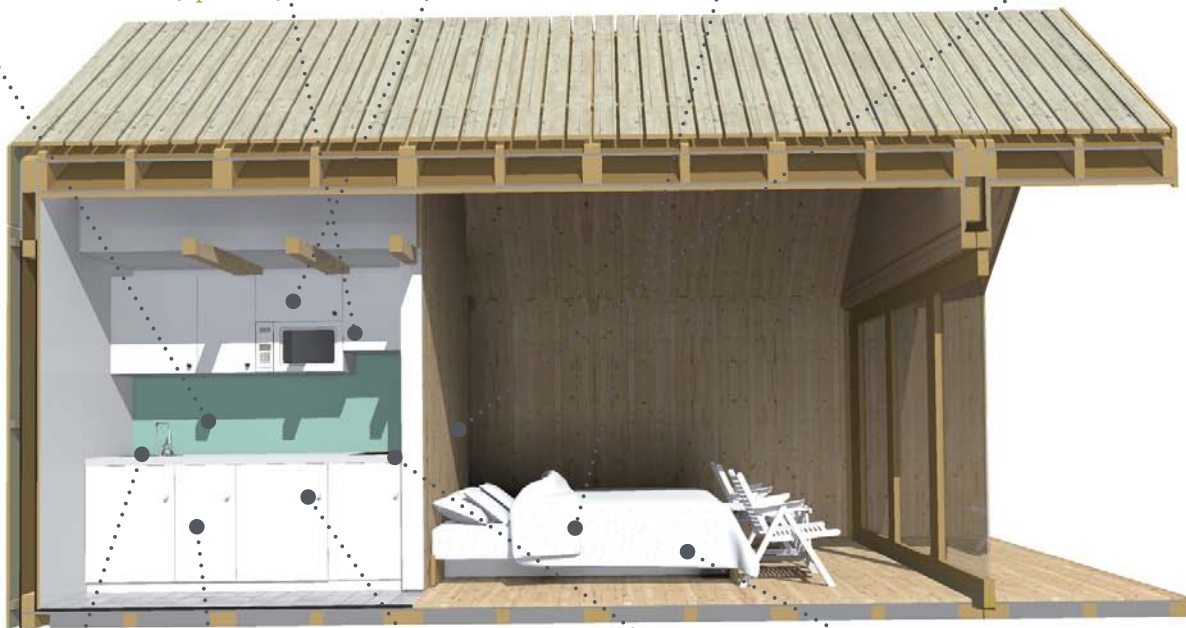
Kitchen cabinet space



160 x 200 canopy massive wood bed (optional)



LED reading lights (optional)



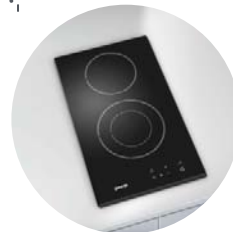
Kitchen sink with a faucet



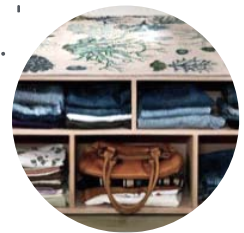
Integrated dish washer (optional)



Integrated refrigerator (optional)



2 x glass cooking plate (optional)



Under-bed storage (optional)

LUSHNA Suite LUX: Bathroom



Wardrobe with mirror (optional)



Ceramic toilet



Glass shower cabin



Ceramic Basin



all furniture massive wood MATERIALS
electric heater HOT WATER
220/110 V fuse box ELECTRICITY

SEWAGE grid connection or autonomous
MAINTENANCE none – natural untreated wood
HEATING electrical heater



Textile quality

All Textile Elements
Including zips have up to
2 years guarantee.



Roof quality

Up to five years guarantee
on all the roofs.



Long lasting

All our products are built
to last with the best
quality materials.



Eco construction

All Lushna products are
made from natural and
ecological materials. The
use of wood as the main
material in all Lushna
products reduce CO2
emissions considerably.

LUSHNA Suite LUX: Technical specifications

FLOOR CONSTRUCTION	<ul style="list-style-type: none">• Wooden flooring thickness 20mm, spruce AB, 2x lacquered• Vapour barrier Sd = 10m• Massive wood construction studs• Wood fibres insulation STEICO flex 12 cm• OSB board 15mm
WALLS	<ul style="list-style-type: none">• Interior wooden cladding, tongue / groove thick. 20mm, spruce AB, 1x wood stained.• Vapour barrier Sd = 10m• Massive wood construction studs• Insulation wood fibres STEICO flex 12cm• OSB board 15mm
ROOF	<ul style="list-style-type: none">• Interior wooden cladding, tongue / groove thick. 20mm, spruce AB, 1x wood stained.• Vapour barrier Sd = 10m• Massive wood construction studs• Insulation wood fibres STEICO flex 12cm• OSB board, thick 15mm• 1x EPDM waterproof membrane roofing
INTERIOR DOORS AND WALLS Bathroom and toilet	<ul style="list-style-type: none">• Glass walls*, 8mm, on hinges
INTERIOR FURNITURE-BED* (optional)	<ul style="list-style-type: none">• 19 mm massive wood Tilly board thick. 19mm with milled grooves• All 2 x oiled
BATHROOM equipment	<ul style="list-style-type: none">• Ceramic floor, electric water heater – boiler ceramic wash basin, Ceramic toilet bowl with flushing system, glass shower with ceramic shower plate and shower faucet system, mirror
KITCHEN	<ul style="list-style-type: none">• Ceramic floor, kitchen cabinets and kitchen counter, kitchen sink with a faucet
ELECTRICITY INSTALLATION	<ul style="list-style-type: none">• Robust electrical fuse box with electrical box, 6x plugins, 5x light, connections kitchen.
LIGHTS	<ul style="list-style-type: none">• LED reading lights• General light
FRONT GLASS	<ul style="list-style-type: none">• Two layered glass U= 1,1 with wooden frame and glazing strips. 2 x rear window 100/100 cm wooden.
EXTERIOR WOOD	<ul style="list-style-type: none">• Larch wood in façade and terrace floor• Larch wood battens coloured in black.• UV membrane with glued connections
FOUNDATIONS* (optional)	<ul style="list-style-type: none">• Krinner ground-screws with dimensions and length depending on type of soil of location.

LUSHNA Suite: FAQ



What is included in the BASIC price per unit?

Basic price includes the structure, roof, facades, sanitary kit, shower plate, electricity and lighting. There is an additional cost for furniture, kitchenette and bedding accessories. Foundations, transport and installation are not included in the basic price. Upon request we can provide a complete solution including our "Ground Screw foundation system", ecological and concrete free.

Is it wired/able to have heat, AC, fan, electricity, water?

Electrical, water and sewage installation, lighting, connections and sockets are included in the basic price.

What preparation for the placement of Vilas needs to be made?

You don't need to pre-prepare your land. We can adapt to the topography. Nevertheless we need you to provide connections for electricity, water and sewage for this unit. We can offer the complete support on designing and planning your destination.

Foundations

We use ecological Ground Screws Foundation from Krinner, Germany. We just screw the foundations to ground and place the cabins on the screws and bind them together. In this way no pre-preparation of the location is necessary. We don't damage the location and cabins can be moved to the other location without major visible signs on the previous location.

Warranty

5 years on the roof and construction and 2 years on the textile parts.